



Kačice, Čelechovická, betonový stožár

● GSM (18534,18535,18536)

● LTE 800 (401:11,12,13)

Loc: 50°09'53.08"N 13°59'02.62"E

Tachlovice, betonový stožár u bývalého dolu

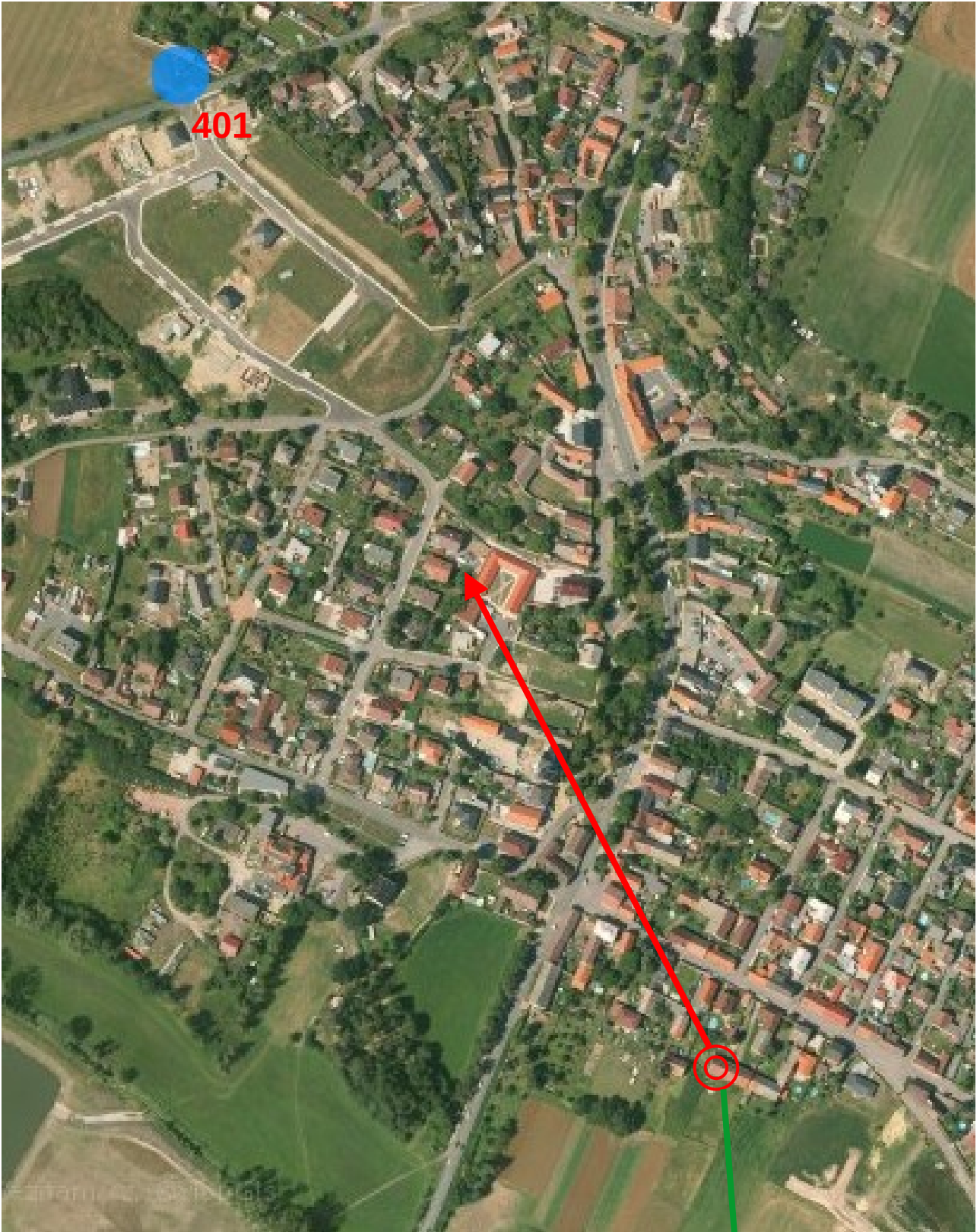
● GSM (20351,20352,20353)

● LTE 800 (914:11,12,13)

● LTE 1800 (914:1,2,3)

● LTE 2100 (914:5,6,7)

Loc: 50°07'46.42"N 13°59'36.74"E



914

401



914